

# Point of Sale (POS) Integration

Retail Stores  
 Convenience Stores  
 Liquor Stores  
 Pharmacies  
 Fast Food Stores  
 Record Stores  
 Discount Stores  
 Electronics Stores  
 Supermarkets

Can be used on any number of cash registers.

Superimposes all register transaction data onto corresponding video, allowing management to verify cashier activity.

Transaction data can be viewed live or in playback.

On-screen alarm flashing of suspicious transactions.

Store transaction and exception data together with video records.

Integrates with existing POS, EAS and Access Control Systems for complete local & remote security management.

The Point of Sale (POS) application integrates with existing POS terminals to deliver complete local and remote security management. It works by recording and storing a composite image of the terminal transaction data together with a video record. You can view data live or review later on a video recorder, search by transaction keyword or type (eg Void, No Sale, credit card transaction).

## Reduce shrinkage and increase profits.

For all retailers, the bottom line means everything. To maintain profitability, retailers are becoming more strategic in their approaches to reducing asset shrinkage and improving their operational productivity. Each year, inventory theft deprives retail organisations of millions of dollars. The problem is significant and it's only getting worse. Research shows that employee theft, customer shoplifting and point-of-sale fraud will continue to increase over the next few years.

POS integration application can help catch employees stealing from the till, protect against administrative error, vendor fraud or inventory shrinkage/disappearing stock.

The SecureMon™ 1000 digital video surveillance system with integrated Point-of-Sale (POS) application software can address these important security and operational issues in one comprehensive package.

## In-store or remote monitoring

The system provides total control for any POS operation including an integrated reporting tool of all POS operations as well as a video database, which is fully synchronized with all corresponding POS operations.

Working from any network location – in-store, regional or head office – authorised personnel can:

- Start/stop recording video on receipt of specific transactions (For example, look at all credit card transactions or every time the cash drawer was opened in a No Cash sale)
- Receive notification in real-time of user-specified transactions
- Search by transaction information, and view associated video and receipt data
- Store video and transaction data for permanent storage on any networked recording device, such as CD-ROM, DAT tape, network drive, or printer

The POS system expands the video functionality of a DVR surveillance system to specifically address the needs of loss prevention.

## SecureMon™ POS terminal integration system

The POS Application, which is interconnected to the DVR, can display all the transaction data for each specified terminal. The user can associate the record from the POS device with the image recorded on the DVR and then playback those events. The SecureMon™ POS Application not only displays the POS message, but the user can search the database to find any specific event in System Log, and playback the associated events.

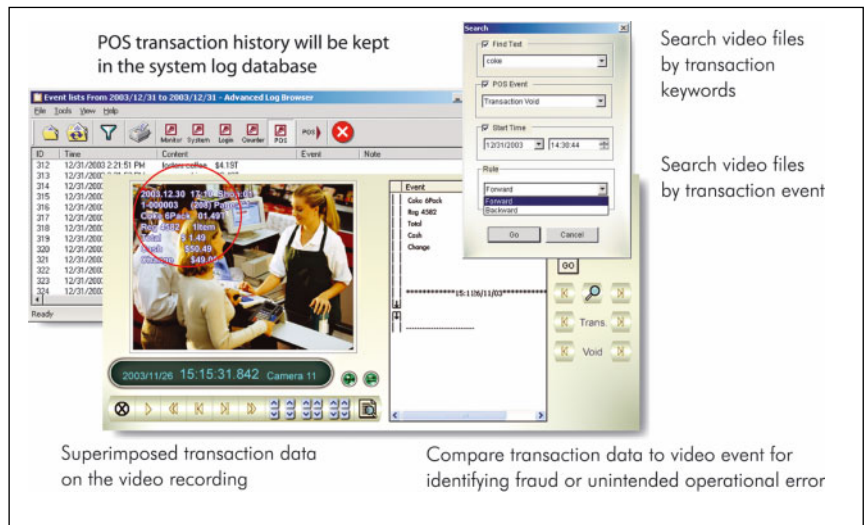
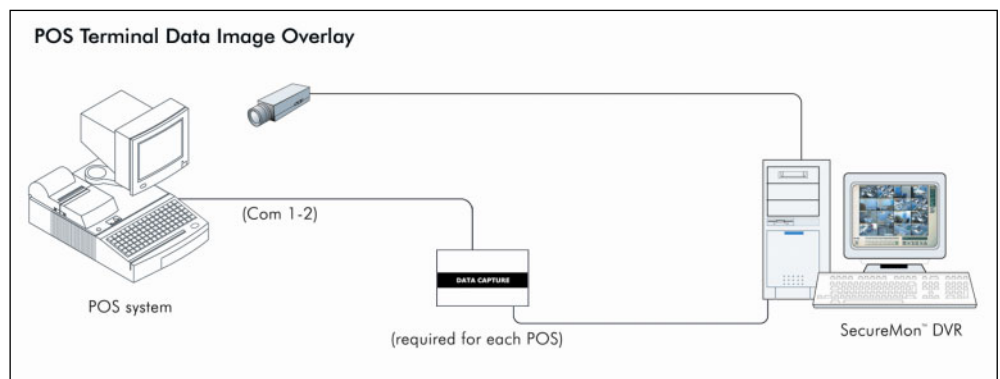
The system allows you to search for video based on point-of-sale transaction data and exception events. This can save significant time looking through hours of video in the hopes of detecting a theft event. You can analyse point-of-sale data to identify suspicious trends and events.

Enter the transaction event parameters in the search criteria and retrieve video with corresponding data instantly for effective detection and verification. Suspicious transaction events can be quickly investigated. Real-time monitoring of shop floor, exit ways, and back office allows for detection of shoplifting incidents and/or employee theft. Comparing transaction data to video can easily identify unintended operational errors. Managers can not only supervise employees but improve fraud prevention as well as operational and management productivity.

It can also provide valuable customer service and marketing information by capturing in-store employee and customer behaviour.

Each cash register and receipt printer is connected via a small data box to the DVR, which captures the video. The system then enables

- The POS data to be displayed on the screen
- User can enter transaction event parameters in the search criteria and retrieve video with corresponding data instantly, for effective detection and verification.



## Benefits

In addition to enhancing a loss prevention program and reducing shrinkage, our digital video monitoring systems are used for retail operations such as:

- ▣ Monitoring customer service
- ▣ Reviewing liability claims
- ▣ Gathering merchandising intelligence
- ▣ Enhancing employee safety
- ▣ Monitoring remote assets and warehouse inventory
- ▣ There are two proven methods in order to prevent losses within POS operations - permanent video monitoring and the continuous tracking of all data for every point-of-sale terminal. Both methods require enormous expenses and in the end may not effectively reduce theft.